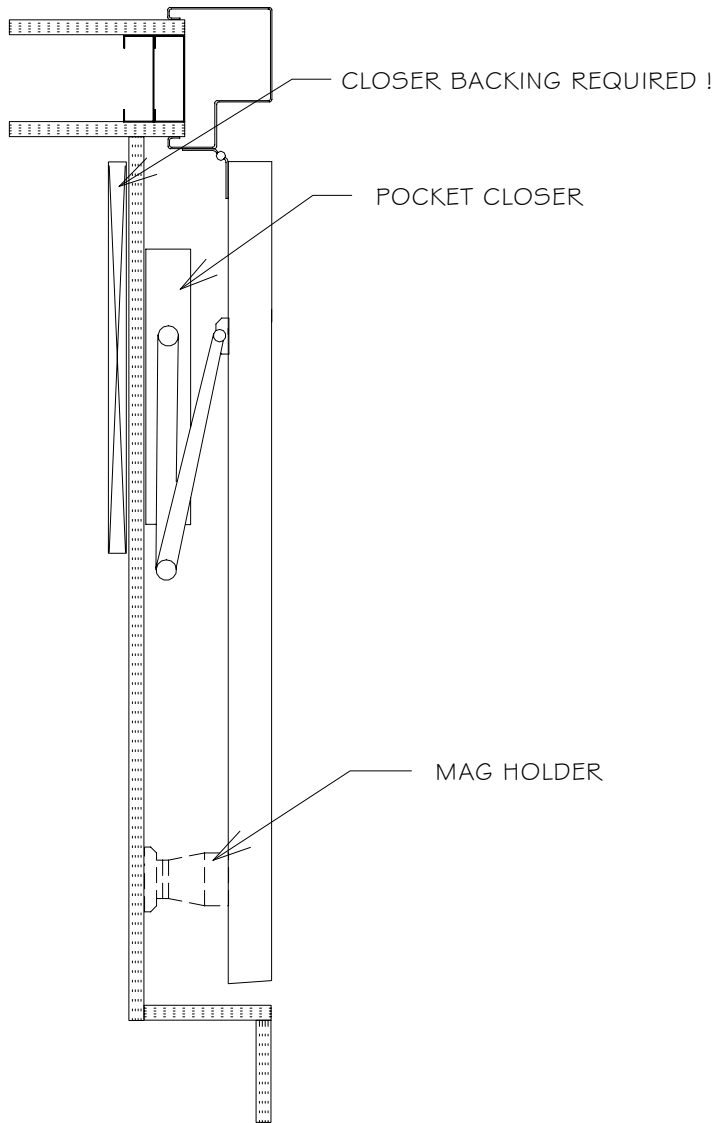
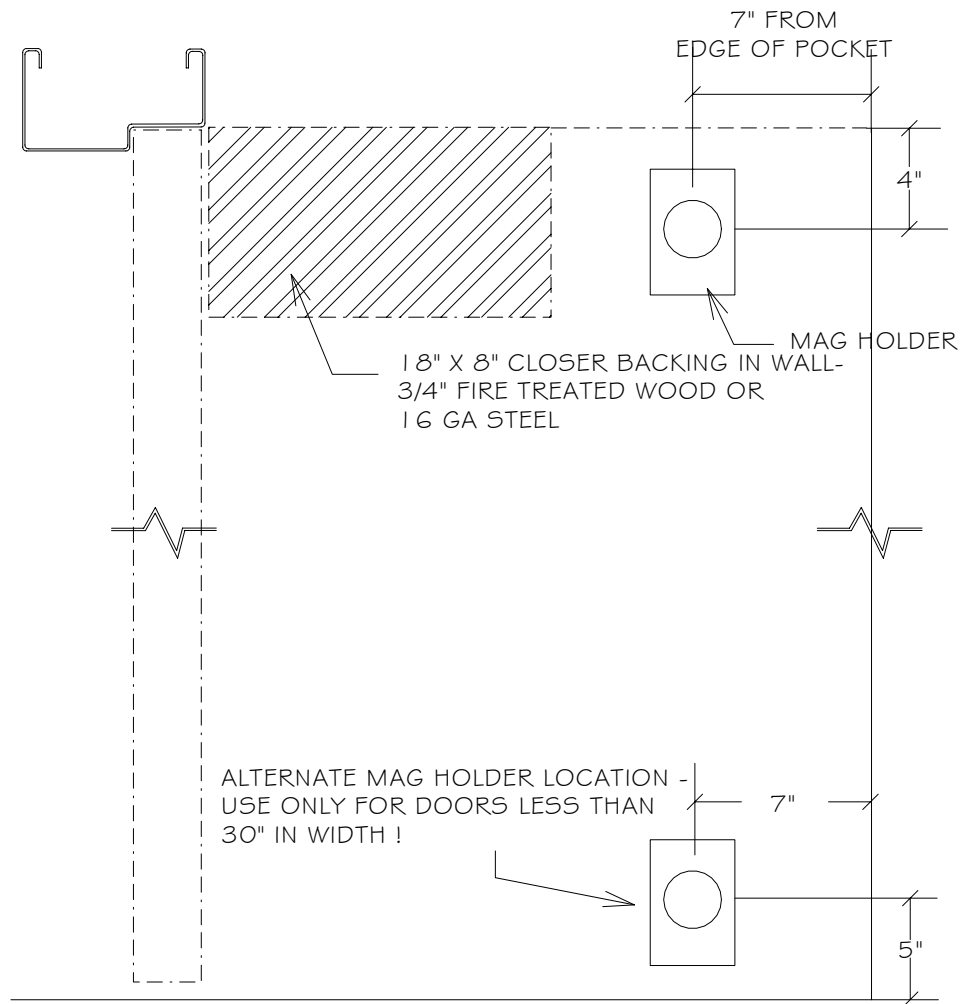


TYPICAL POCKET PLAN

NOTE: FRAME PROFILES MAY VARY



POCKET ELEVATION - 90° SHOWN - 180° AND 135° SIMILAR



INTERSTATE DOOR SALES, INC.	
STANDARD POCKET ELEVATION	
DWG NO: POCKET ELEV	DATE: 08/10/06
SCALE: NONE	DRAWN BY: L. WALSH