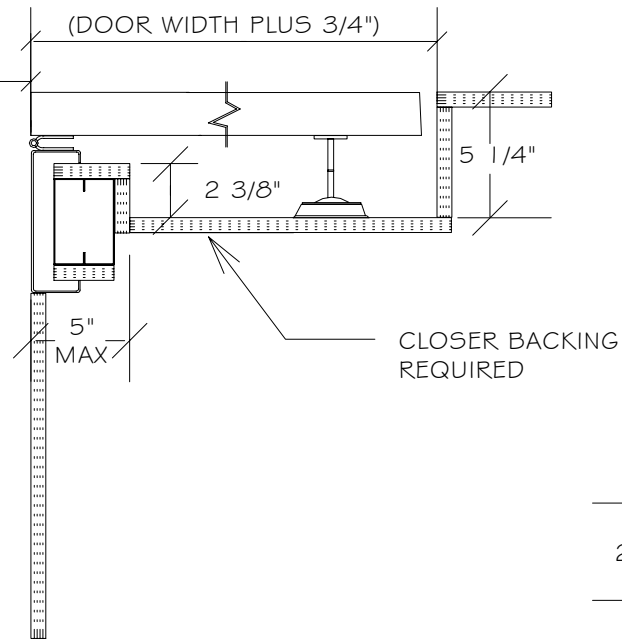
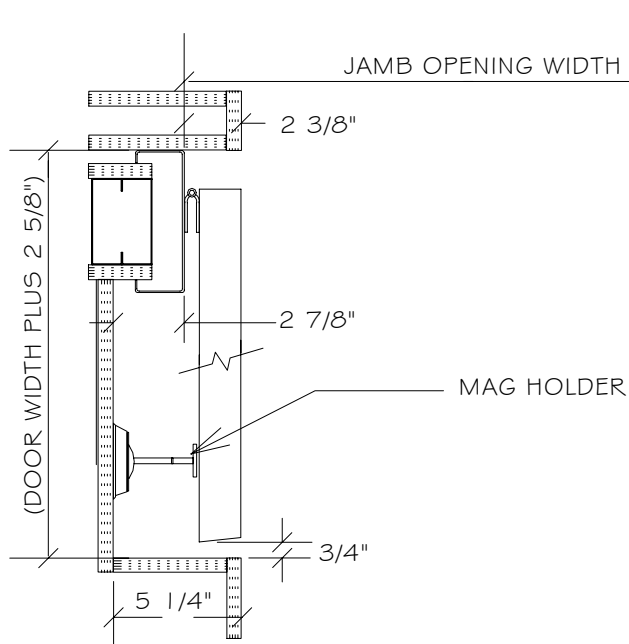
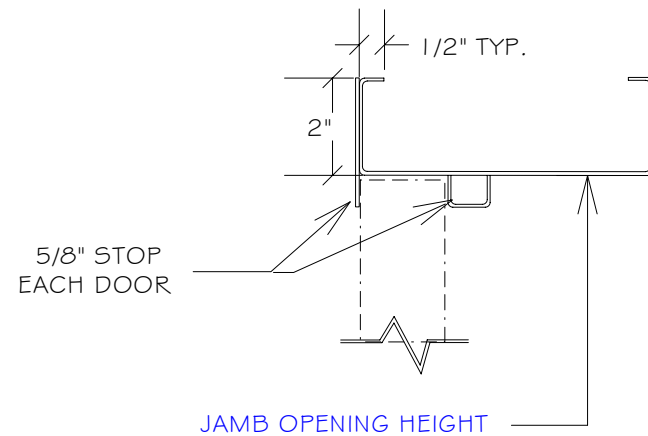


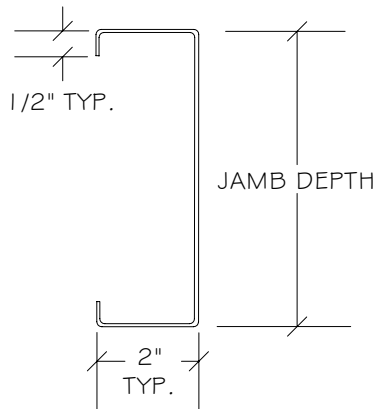
PLAN VIEW



HEAD SECTION



JAMB SECTION



NOTE:  
 ALL DIMENSIONS PERTAINING TO POCKET  
 WIDTH, DEPTH AND SOFFIT CLEARANCES  
 ARE "NET TO FINISH". ALLOWANCES MUST  
 BE MADE FOR WALL AND CEILING FINISHES,  
 BASE BOARD, CROWN MOULDING, ETC.

|   |                    |
|---|--------------------|
| INTERSTATE DOOR SALES, INC.               |                    |
| 90° X 180° DUAL EGRESS<br>HOLD OPEN DOORS |                    |
| DWG NO: DE90180                           | DATE: 08/10/06     |
| SCALE: NONE                               | DRAWN BY: L. WALSH |